

# SOLAR RADIO-CONTROLLED WATCH

## INSTRUCTION MANUAL



**\*BEFORE FIRST USE, IT IS IMPERATIVE TO RESET YOUR WATCH BY FOLLOWING THE PROCEDURE IN SECTION “RESET”.**

### PRODUCT DESCRIPTION

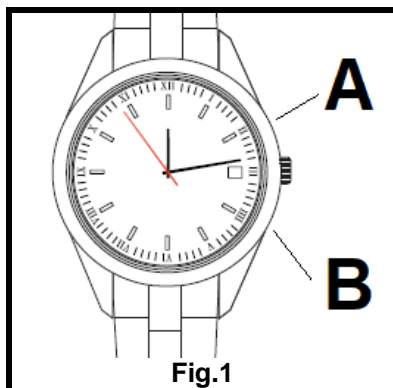


Fig.1

**A.** Display of the day of the week/ RCC signal reception quality

**B.** RCC MODE

Water resistant: 5 ATM

**IMPORTANT:** Buttons A and B  are recessed push buttons. Use the tip of a pen or a sharp object to press them.

### FEATURES

- DCF Radio controlled signal reception
- Automatic reception of radio control signal twice a day: 2:00 AM and 3:00 AM
- 12-hour time format display
- Day of the week display and verification of the quality of signal reception
- Automatic summer time (DST)

**Note:**

- **DO NOT** turn the crown to do the time setting otherwise the watch will not receive the DCF signal after this operation. Time setting could **ONLY** be performed through **SIGNAL RECEPTION** or **RESET** procedure.
- Do not add any stopper to the crown when you do not use the watch.

### MANUAL SIGNAL RECEPTION

**IMPORTANT:** Button B  is a recessed push button. Use the tip of a pen or a sharp object to press it.

Press button B once firmly.to enter RCC mode, the second hand will move forward and stop at 45 seconds.

Receiving time lasts between 3 to 8 minutes.

## DO NOT MOVE THE WATCH OR TOUCH THE CROWN OR BUTTONS WHEN IT IS IN RCC MODE!

If it fails to set the right time, renew the operation to enter RCC mode (refer to RESET procedure).

**Note:** For the best possible reception, position your watch near a window in an upright manner, with the dial facing the window (see figure 2) or outdoors.

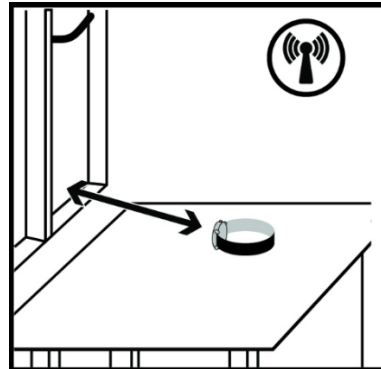


Fig. 2

### The signal cannot be received for the following reasons:

- near high buildings;
- near a built-up area;
- in an area outside the radio signal coverage area;
- near electronic or electrical equipment such as TV, wireless radio, mobile phones and computer which may cause undesirable signal interferences;
- near sources of magnetism or electro-magnetism;
- near heat sources;
- in conditions of bad weather

## AUTOMATIC SIGNAL RECEPTION

The watch will automatically switch to RCC mode at 2:00 AM and at 3:00 AM every day. The signal is always good at night. If your watch cannot get the signal in the daytime, just leave it nearby a window where the signal is strong overnight to get a radio signal.

### DAY OF THE WEEK DISPLAY AND SIGNAL STATE

**IMPORTANT:** Button A  is a recessed push button. Use the tip of a pen or a sharp object to press it.

Press button A once firmly, the second hand will rotate fast, will stop 2 times and pause between each stop (see below for their meaning):

- 1st stop: a figure which indicates the day of the week.
- 2nd stop: a figure which indicates the status of the signal. The watch will pause longer and then, the second hand will turn normally.

See below and in the next page to read the results:

## READING DAY OF THE WEEK

**MONDAY = 5 seconds**



**TUESDAY = 10 seconds**



**WEDNESDAY = 15 seconds**



**THURSDAY = 20 seconds**



**FRIDAY = 25 seconds**



**SATURDAY = 30 seconds**



**SUNDAY = 35 seconds**



## READING OF SIGNAL RECEPTION QUALITY

**Note:** If the second-hand points at **50 seconds**, the RCC signal has been **successfully received**. If it points at **40 seconds**, it has **failed to receive** the signal.

**FAILURE TO RECEIVE  
SIGNAL=  
40 seconds**



**SUCCESSFUL  
RECEPTION OF THE  
SIGNAL=  
50 seconds**



## RESET

To ensure successful completion of reset procedure, the three hands should point to **12H**. Repeat procedure several times until they all point to **12H**.

The reset operation should be done if you encounter the particular cases below:

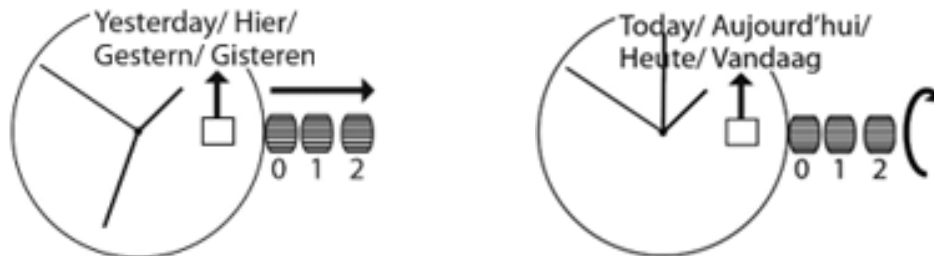
- A loss of synchronization between the hands and the internal saved RCC time - due to factors such as magnetic fields, important shocks or strong vibrations.
- If the watch fails to set itself correctly and RCC signal status has not been successfully received.

Reset your watch by proceeding as below:

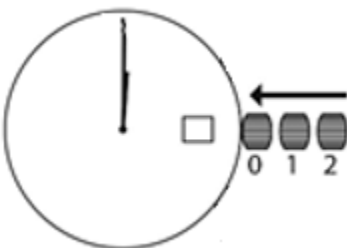
1. **Pull out the crown to position 1, turn the crown anticlockwise to set the day to yesterday.**



2. **Pull the crown out to position 2. The second hand stops. Press button A repeatedly until the second hand reaches the 12H position. Then turn the crown clockwise until the exact date of today is displayed. Then continue to turn the minute hand until the hour hand and the minute hand points to 12H.**



3. **Push the crown back to position 0. The seconds hand will rotate quickly and stop on the number 9. Then, the watch will switch to signal reception mode. The complete procedure lasts between 3 and 10 min. The time will update automatically if signal reception was successful.**





**IMPORTANT:**

**DO NOT** store the watch in the dark more than 6 months.

If you plan not to wear watch for a long time, charge the watch fully before storing it. See battery charging instructions below.

## BATTERY CHARGING

### BATTERY INFORMATION:

ML-1220 lithium-ion button cell rechargeable battery, 3V

The solar watch's battery can be recharged by sunlight and artificial light. It is best to place the clock face under a fluorescent lamp, as this does not damage the watch due to its low heat radiation (in contrast to other artificial light sources). Fluorescent light is the light most similar to natural sunlight.

### BATTERY CHARGING TIME:

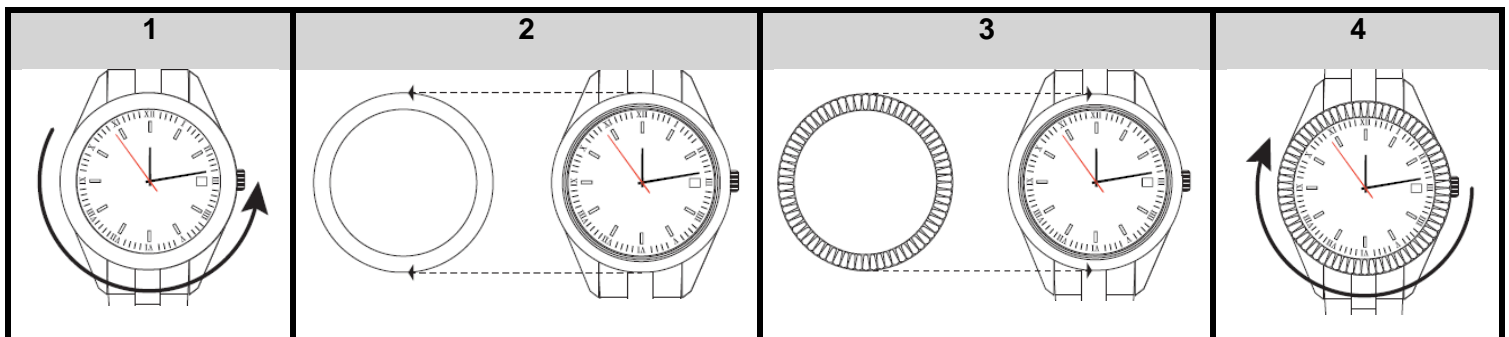
Light type	Light intensity	Full charging time
Sun (Near a window)	40 000 LUX	24 hours
LED/ Artificial light	15 000 LUX	36 hours

**After charging, do the RESET procedure (see part: Reset).**

This watch uses a special rechargeable battery to store power produced by the solar cell, so regular battery replacement is not necessary. However, after very long use, the rechargeable battery may lose its ability to achieve a full charge.

- Never try to remove or replace the watch's special battery yourself.
- Use of the wrong type of battery can damage the watch.
- Keep the watch in an area normally exposed to bright light when storing it for long periods. This helps to keep the rechargeable battery from going dead.

## HOW TO CHANGE THE RING?



1  
Unscrew the ring.

2  
Remove it.

3  
Place the new ring on the watch.

4  
Screw it.

## WARNING

- Always make sure the crown is fully returned to the case to ensure water resistance.
- DO NOT operate the crown or buttons in the water or when the watch is wet.
- To prolong the appearance of your watch, avoid contact with the following: Perfumes, hairspray, cosmetics, detergents, adhesives and paints as they cause discoloration, deterioration and damage.
- To help prevent possible damage from perspiration, dust and moisture, periodically wipe your watch with a soft dry cloth.
- To ensure lasting durability please take note of the following points: Never attempt to open the case of your watch. Batteries should be replaced by a qualified technician.
- Your watch is shock-resistant, however, please be careful not to drop or hit your watch against hard surfaces, as this will cause damage.
- "Do not swallow the battery, chemical Burn Hazard"
- This product contains a coin / button cell battery. If the coin / button cell battery is swallowed, it can cause severe internal burns in just 2 hours and can lead death.
- Keep new and used batteries away from children.
- If the battery compartment does not close securely, stop using the product and keep it away from children. If you think batteries might have been swallowed or placed inside any part of the body, seek immediate medical attention.

**WARNING: You should not dispose of this device with your household waste. A selective collection system for this type of product is implemented by your local authorities. Please contact your local authorities to find out how and where collection takes place. These restrictions apply because electrical and electronic devices contain dangerous substances that have harmful effects on the environment or on human health and must be recycled. This symbol indicates that electrical and electronic devices are collected selectively. The symbol shows a waste container crossed out with an X symbol.**

Imported by EML–trading name Prodis, 1 rue de Rome, 93110 Rosny-sous-Bois, France/ Made in P.R.C.

Marketed by EUROtops Versand GmbH, Elisabeth-Selbert-Str.3, D-40764 LANGENFELD, Germany

