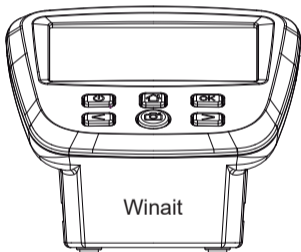




22 MP High Resolution  
Film to Digital Converter



User Manual

# Contents

- 1 - Introduction
- 2 - Quick Start
- 3 - Parts Description
- 4 - Loading Negative Film Slides
- 5 - Loading Positive Slides
- 6 - Loading Super 8 / 110
- 7 - Capture Mode
- 8 - Mirror / Flipping
- 9 - Brightness / Color Settings
- 10 - Playback / Gallery Mode
- 11 - Deleting Images
- 12 - Format Mode
- 13 - Image Resolution / Film Type
- 14 - USB / SD Card Upload
- 15 - Language Selection
- 16-17 - Product Specifications
- 18 - Warranty Information

# Introduction

Thank you for purchasing the Winait digital film scanner. Please read this introduction manual before use. There are many functions and tips regarding the use of this scanner detailed in this manual. We recommend reading the entire manual to optimize your experience

## Proper Maintenance

Please keep your film scanner in a cool and dry location. To prevent electric shock do not disassemble your scanner. Do not place your scanner near sources of high heat. Do not block ventilation vent on unit to avoid overheating. Do not leave USB cord in the scanner if your are not using it for a long period of time

## What's Included:

- Digital Film Scanner
- Power Adapter
- USB Cable
- Negative Film Adapter
- Positive Slide Adapter
- Super 8 Film Insert
- 110 Film Insert
- 110 Slide Insert
- Cleaning Brush
- User Manual

## Quick Start

Connect the included USB cable into the included power adapter. Connect the other end of USB cable into the back of the scanner. Now insert the wall plug into an outlet and press power.

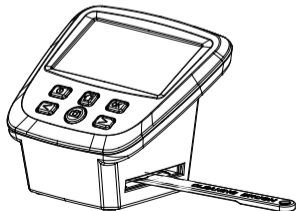
## Memory

The scanner's default memory setting is to save images on its internal memory. The scanner is also compatible with SD memory cards (sold separately). The memory card slot is located on the back of the unit. When a memory card is inserted, the images will automatically be saved on the card.

PLEASE NOTE: SD memory card is not included and must be purchased separately.

## Capture Mode

Once you power up the scanner it will automatically default to Capture Mode. In Capture Mode you will see the camera icon located on the screen. Press OK and you will enter Capture Mode. At any time, you can also press the Camera button on the scanner to enter Capture Mode. Your scanner is now ready!



Power Button



Toggle right or  
flip image



Home Button



Toggle left or  
mirror image



OK/confirm  
selection

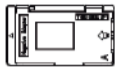


Capture/Scan  
Button

# Product Parts Description



Slide Adapter



Negative Adapter



110 Slide Insert



110 Film Insert



Super 8 Film Insert



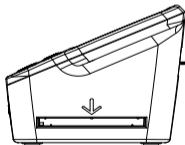
FILM SCANNER



USB Cable



Power Adapter



Loading Side View



Cleaning Brush



Back View  
SD Card Slot  
USB Port

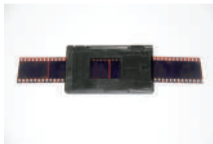
# Loading Negative Film Slides

It is highly recommended that you make sure the scanner is cleaned before each use. Slide the included cleaning brush into the scanner, where the arrow indicates several times. It is also very important to make sure your negatives are clean from dust and smudge as well - to ensure best scan quality



To load your negative film, please locate your negative tray holder. You can open the tray by flipping the top open at the middle. Insert your negative film into the tray and make sure to properly close the tray until it clicks. Insert your negative film tray into the scanner from right to left.

To scan the image, make sure the scanner is in Capture Mode. When powered on, the scanner will automatically enter Capture Mode. You can also find Capture Mode in the Main Menu or any time by pressing the camera button on the scanner. When you are in Capture Mode, you can now slide the tray into place and scan. If you like the image displayed on the screen, press the Scan button and your image will be scanned.



# Loading Positive Slides

It is highly recommended that you make sure the scanner is cleaned before each use. Slide the included cleaning brush into the scanner, where the arrow indicates several times. It is also very important to make sure your negatives are clean from dust and smudge as well - to ensure best scan quality



To load your positive slides, please locate your slide tray holder. You can open the tray by flipping the top open at the middle. Insert your positive slides into the tray and make sure to properly close the tray until it clicks. Insert your positive slides tray into the scanner from right to left.

To scan the image, make sure the scanner is in Capture Mode. When powered on, the scanner will automatically enter Capture Mode. You can also find Capture Mode in the Main Menu or any time by pressing the camera button on the scanner. When you are in Capture Mode, you can now slide the tray into place and scan. If you like the image displayed on the screen, press the Scan button and your image will be scanned.



# Loading Super 8 and 110 Film

It is highly recommended that you make sure the scanner is cleaned before each use. Slide the included cleaning brush into the scanner, where the arrow indicates several times. It is also very important to make sure your Super 8 and 110 Film are clean from dust and smudge as well - to ensure best scan quality.



To load your Super 8 and 110 film, please locate your negative adapter and Super 8 and 110 insert. Open the negative adapter by flipping the top open at the middle. Place your Super 8 or 110 insert onto the lower panel of the negative adapter. Make sure "this side up" is facing upward and the small arrow faces leftward. Close the adapter until it clicks. Slowly feed the into the scanner from right left until it clicks. Slowly feed the film into the scanner from right to left until you see the image displayed on the screen.

To scan the image, make sure the scanner is in Capture Mode. When powered on, the scanner will automatically enter Capture Mode. You can also find Capture Mode in the Main Menu or any time by pressing the camera button on the scanner, When you are in Capture Mode, you can now slide the into place and scan. If you like the image displayed on the screen, press the Scan button and your image will be scanned.

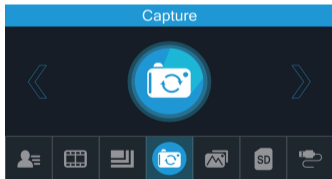




# Capture Mode

Capture Mode is when the scanner is ready to scan your image. When you power the scanner on it will automatically default to Capture Mode, or you can press the camera button to manually enter Capture Mode. If you are in the Main Menu, you can scroll left or right until you see Capture Mode on the screen as well.

When you are in Capture Mode, slide the tray into the scanner from right to left. Once you see your image on the screen, and are pleased with the image, press the camera button to scan. The image will automatically be saved to either the internal memory or memory card if inserted (sold separately).



## Mirror and Flipping

If any image requires mirroring or flipping before you scan, press the left arrow button to apply any mirror affect. Or you can press the right arrow to flip the image. This step corrects user error when loading slides. When you are ready to scan your images, press the camera button to scan.



Left  
Arrow →

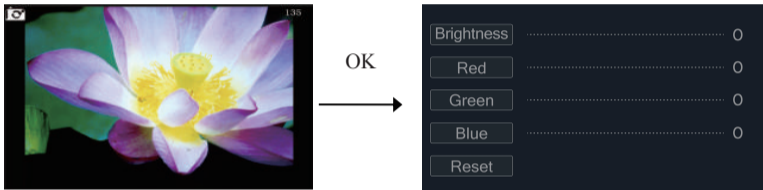


Right  
Arrow →



## Brightness and Color Settings

You can adjust the brightness and color of any image that appears on the screen. In Capture Mode, press OK and the brightness and color settings will appear on the screen.



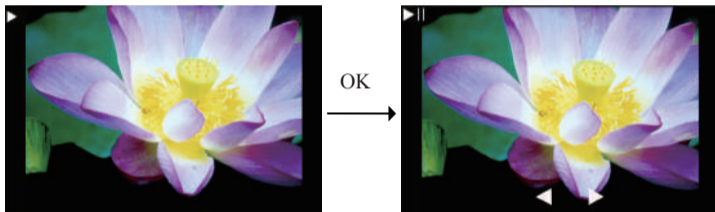
Using the right and left arrow buttons, you can toggle between brightness and color options. Press OK to proceed on your desired option. Use the arrow keys to adjust the setting and confirm by pressing OK. When you have adjusted all your desired options, press the camera button to return back to Capture Mode.

If you wish to reset all the options back to factory settings, simply press OK on the reset option.

## Gallery / Playback Mode



You can view all the images that were scanned and saved to the internal memory or on a memory card. From the main menu, use the arrow keys until Gallery Mode appears on the screen and press OK. You can toggle between images using the arrow keys.



If you have an SD card inserted into the scanner, those images will automatically appear on the screen for viewing. If you would like to view images from the internal memory, please remove the SD card. When in Gallery/Playback Mode, you can press the OK button to toggle between pictures manually using the left and right arrow buttons.

## Deleting Images



While in Playback Mode, you have ability to delete images.

First you need to press OK to stop Playback Mode. Then press OK again and three icons will appear on the display.

Use the left and right arrow buttons to choose an icon.



The first icon is the Exit icon. This will keep you in Playback Mode.

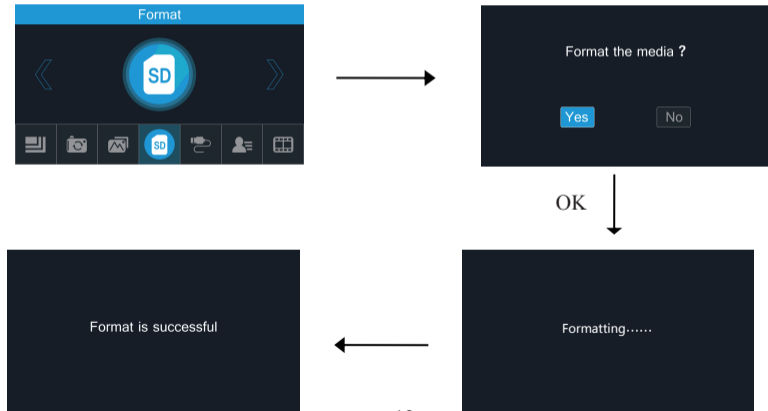
The second icon is Delete. Highlight this icon and press OK to delete the image.

The third icon is Home. This icon will take you to the Main Menu.

# Format Mode



Reformatting the internal memory or the memory card will result in deleting all of your stored images. To reformat, using the left and right arrow buttons, find the Format icon in the Main Menu. Press the OK button to enter the scanner into Format Mode. Using the left and right arrow buttons, select yes or no to reformat. Reformatting may take a few moments. Once reformatting is completed the scanner will automatically go back to the Main Menu page.



## Image Resolution



From the Main Menu screen, use the left and right arrow buttons until the Resolution icon appears on the display and press OK. Using the left or right arrow buttons, select between 14MP or 22MP and press OK. The default option is set to 22MP.



## Film Type

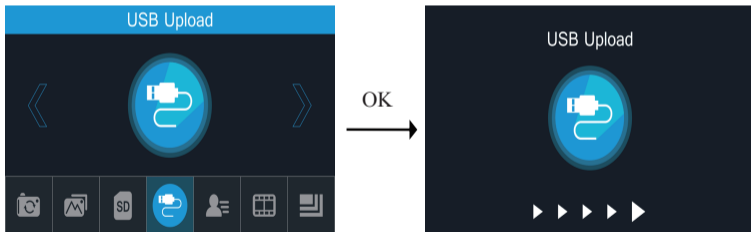


Before scanning, it is important to select the correct film type section, From Main Menu, toggle left or right until you see Film Type appear on the screen and press OK. From here, use the arrow keys to select the proper film type and press OK. After selecting the appropriate film type and pressing OK, the scanner will automatically enter Capture Mode.

## USB Upload



Export your stored images to your PC or MAC at any time. If your pictures are stored on an SD card, simply remove the SD card from your scanner and insert into your computer. You can also export images stored on the scanners internal memory. Plug the USB to a USB port on your PC or MAC and the other end into the scanner. From the Main Menu mode, using the left and right arrow buttons, find the USB MSDC Icon and press OK. Your computer will assign a drive to the scanner. Open that drive on your computer to access images and transfer them to your computer.





## Language Selection

The Winait film scanner can be set to eight different languages. From the main menu screen use the left and right arrow buttons to find the language icon and press OK. Select your preferred language and press OK.



## Product Specifications

1	Function	Film scanner
2	Interface	USB2.0*1
3	Image Sensor	14.0 Mega pixels (4416*3312) 1/2.33" CMOS sensor
4	Display	5" TFT LCD (480*854)
5	Exposure Control	Automatic / Manual (-2.0 EV~ +2.0EV)
6	White Balance	Automatic
7	Resolution	14 Mega pixels - 22 Mega pixels (Interpolation)
8	Picture Aspect Ratio	135/3:2, 126/1:1, 110/4:3, Super8/3:2
9	Scanning Method	Single

10	Film Type	110, 126KPK, 135, Super 8
11	Picture Effects	B&W, Slides, Negatives
12	Light Source	LED Backlight
13	File Format	JPEG
14	Built-in Memory	128M
15	External Memory Card	SD card up to 32GB
16	Scanning Speed	2-3 second
17	Power Supply	DC 5V /1A ( USB ) Adapter
18	Language	S-Chinese / T-Chinese / English /French /German / Italian / Spanish /Japanese
19	Support System	Windows XP - Vista - Windows 7 Windows 8 - Windows 10 - Mac10.7.3

20	Product size	5.9"H x 5"D x 4.9"W
21	Weight	375 Grams

## **Warranty Information:**

The fim scanner includes a 1 year limited warranty. The warranty covers manufacturer defects for a period of 1 year from date of purchase. The 1 year limited warranty does not cover wear and tear or any defects caused by the user.

For more information please visit our website at:

**Thank you for choosing Winait!**